

LED Channel – 971 Series

The **971ASL** is a slimline LED Channel compatible with **LED Strips up-to 12.3mm (0.48") wide**.

971 Series is designed to offer **dot-free (hotspot-free)** lighting when used with 120+led/m LED tape lights.

Snap-In Frosted Cover Lens provides ease of installation.

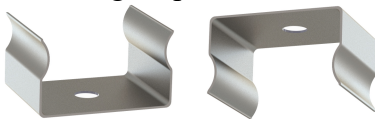
Type:.....**LED Channel**
 Material:...**Aluminum 6063-T5**
 Surface:.....**Clear Anodized / Black**
 Height:.....**14.40mm / 0.57"**
 Width:.....**16.70mm / 0.66"**

Length Availability

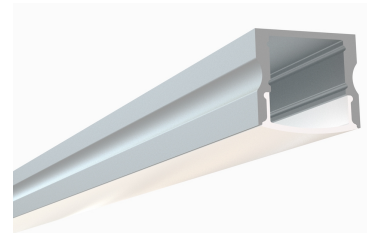
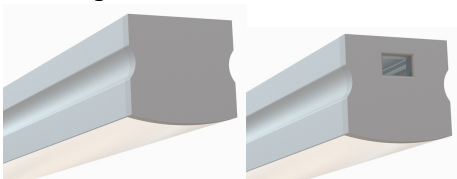
8ft (Actual Size 94") / 2.40m
 10ft (Actual Size 118") / 3.00m

Accessories

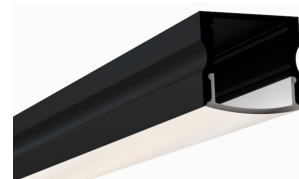
Mounting Clips



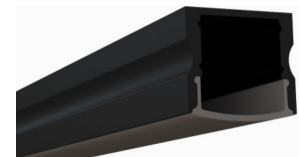
End Caps



971ASL



971ASL-B



971ASL-BB

