

902 Series

LED Light Housing

- Available Lengths **12in, 16in & 20in**
- LED Application Surface Width **6.69in**
- **Heavy-Duty** Heatsink
- High Capacity Heat Dissipation
- **Water Proof** Design
- Adjustable Mounting
- External Driver Housing (Optional)

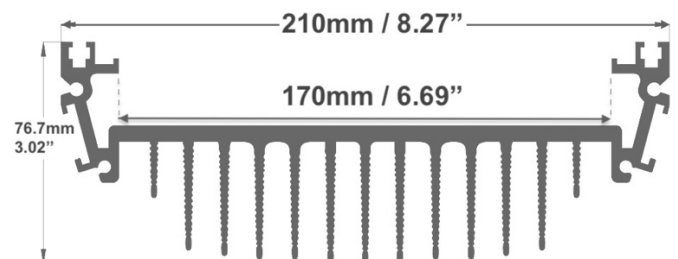


Product Features

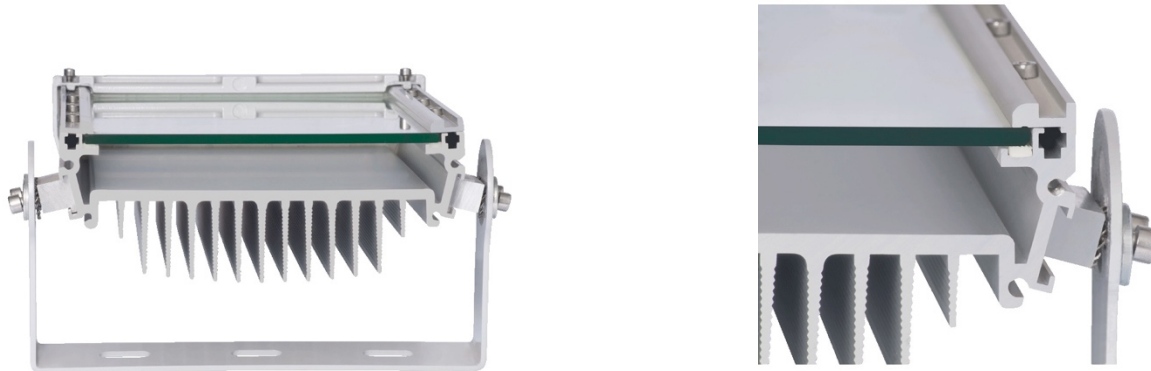


Heavy-Duty Heatsink

Designed to offer better Heat Dissipation

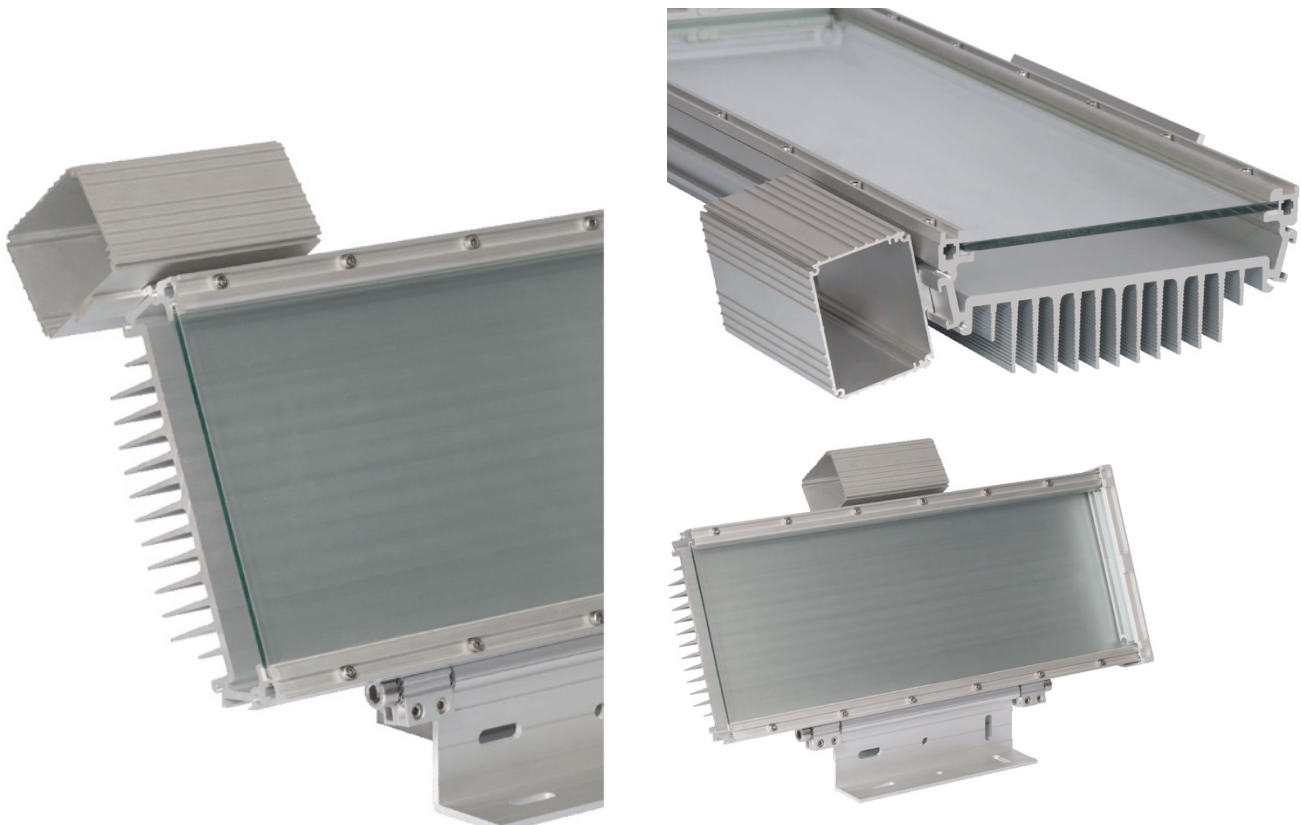


Front Glass Window Sealing Application with **Silicon Gaskets**



Driver Housing

1906ASL* Driver Housing Profile



*For **Driver Housing** needs, the **1906ASL*** profile is compatible with the 902ASL thanks to its sliding channels on both sides

*Should be ordered Separately

Mounting Options

902ASL-MNT Adjustable Mounting Bracket compatible with all length options.



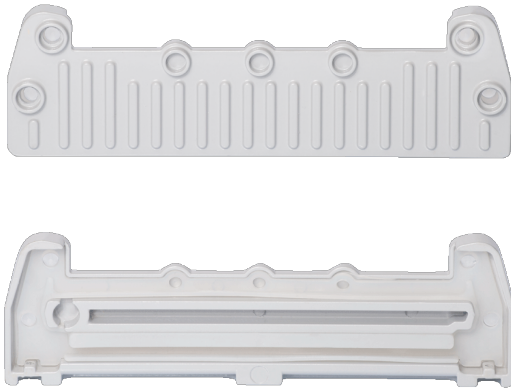
902ASL-MNT

Adjustable Mounting Bracket (AMB-XL) compatible with 16in and 20in length options.



AMB-XL

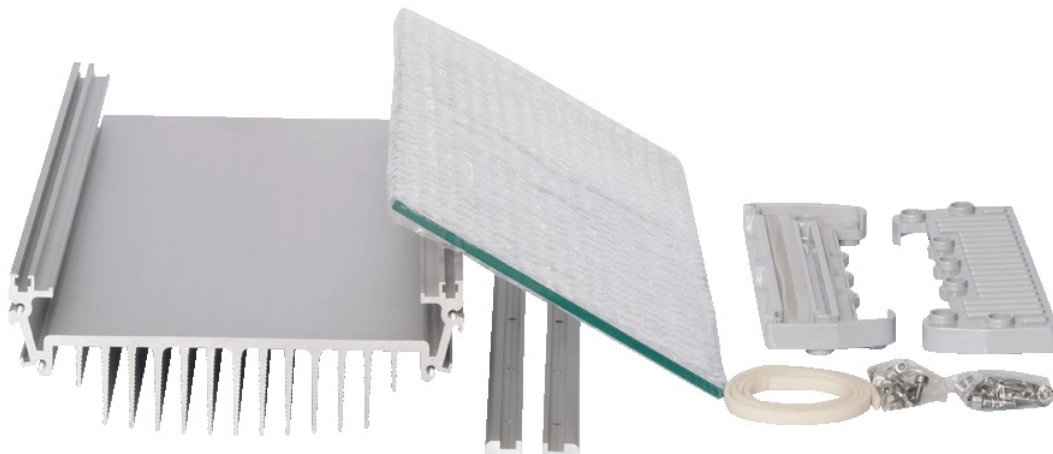
Side Covers



Aluminum Side Covers

Electrostatic Painted End Caps
with Special Designed Silicon
Gaskets

What's in the box?

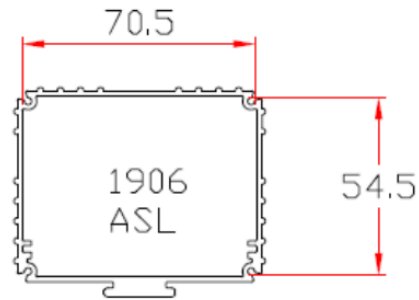
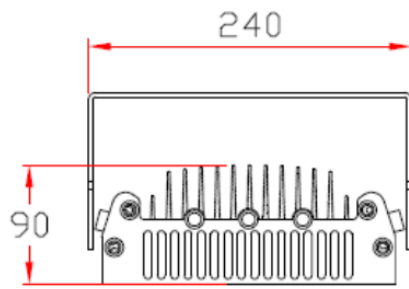


Standard 902 Series is offered as **all-inclusive finished product** with 12in (300mm), 16in (400mm) and 20in (500mm) Heatsink, Special design Aluminum Side Covers with Gaskets, Front Window Frame Sticks, Front Window Sealing Gasket, a Tempered Window and Hardware.

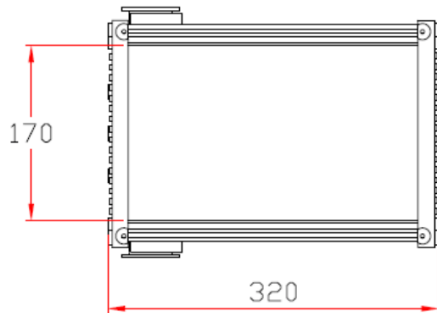
12in Version also includes 902ASL-MNT Mounting Bracket.

16in and 20in Versions do not include Mounting Brackets. Should be ordered Separately.

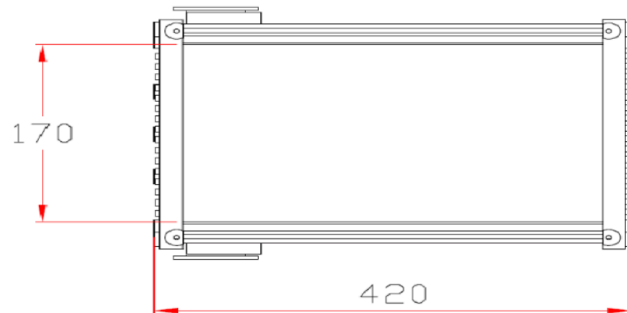
Technical Drawing



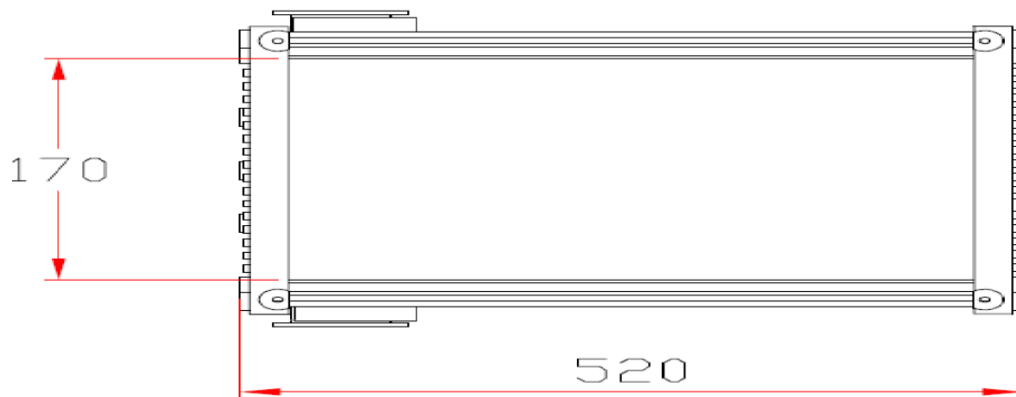
1906ASL Driver Housing



902 Series 12in.



902 Series 16in



902 Series 20in

Heatsink Extrusion	6063-T5 Clear Anodized Aluminum
Side Covers	Electrostatic Painted Aluminum
Front Window	Tempered Glass
Gaskets	Silicon Gasket
Mounting Bracket	3.5mm HRP Electrostatic Painted Aluminum



902 Series 12in.



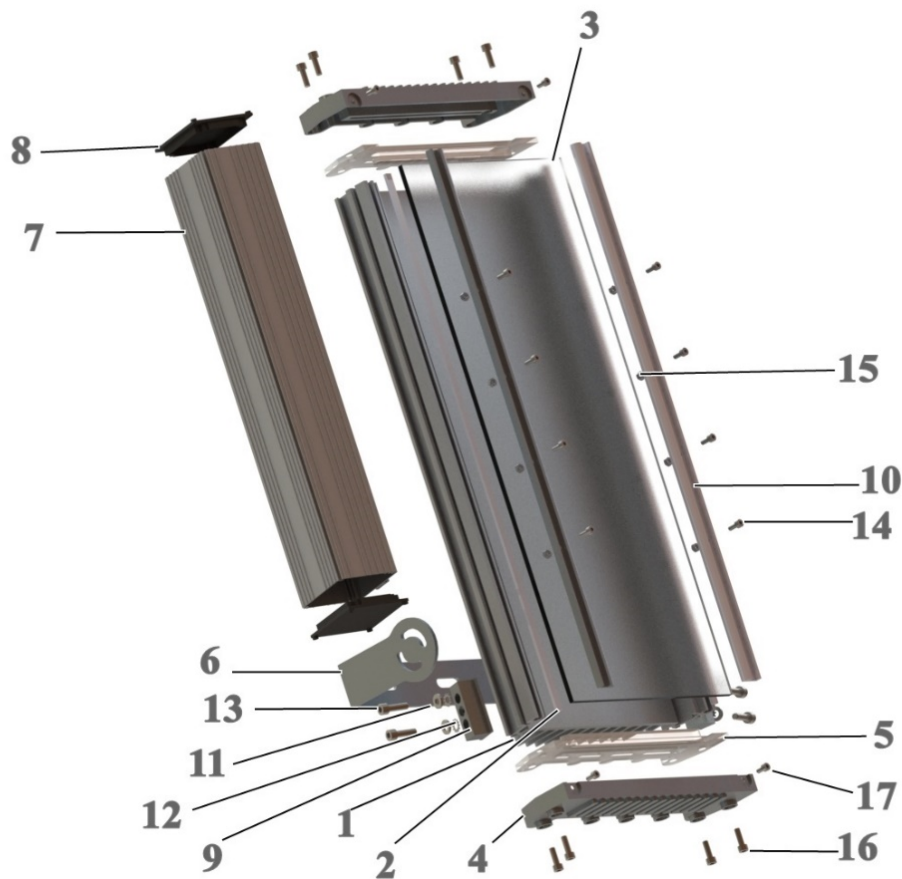
902 Series 16in



902 Series 20in

Ordering Information

Profile	Profile Length	Mounting	Driver Housing
902 Series	12" (300mm) 16" (400mm) 20" (500mm) Custom Length* *(Available upon Request)	902ASL-MNT AMB-XL	1906ASL (Optional) (Specify Length)



Nr.	PRODUCT	QTY
1	902ASL Extrusion Profile	1
2	Gasket for Front Glass Window	2
3	Glass Window	1
4	Aluminum Side Cover (End Caps)	2
5	Silicon Gasket for Side Cover (End Caps)	2
6	Mounting Bracket	1
7	1906ASL Driver Housing Profile	1
8	1906ASL Driver Housing Plastic Side Caps	2
9	Sliding Part for Mounting Bracket	2
10	Glass Window Sticks	2
11	M6 Washer	4
12	M6 Lock Washer	4
13	M6X20 Imbus Bolt	4
14	M4X10 Imbus Bolt	8
15	M4 Nut	8
16	M5X16 Imbus Bolt	8
17	M4X8 Imbus Bolt	4