

## LED Channel - 702 Series

The **702 Series** is a **medium-sized low-profile LED Aluminum Channel** compatible with **LED Strips up-to 0.79" (20mm) wide**.

It's designed for **high output LED lighting applications** compared to slimline channels with its thicker heatsink design. It is a perfect selection for high-output **Horticulture Grow Lighting** applications as well as **outdoor wall-washing** applications.

Thanks to its **mounting channel** on its back side, it features a **wide range of installation options**.

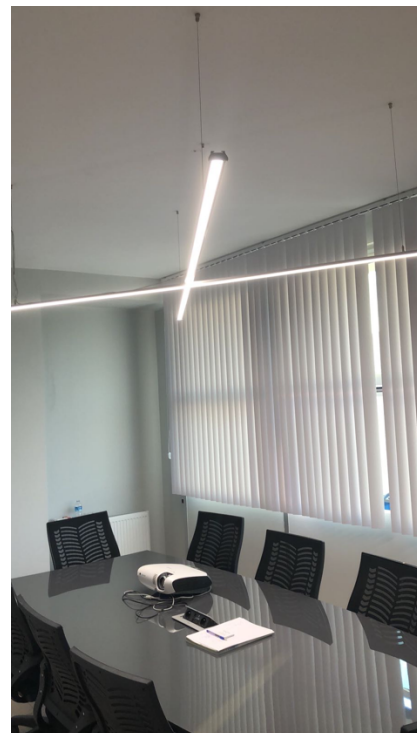
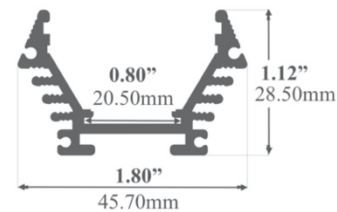
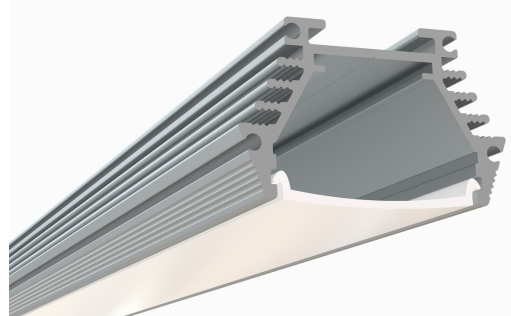
**702 Series** can be used with three different mounting options;

- Pendant LED Channel with **Suspension Kit**
- Surface Mount LED Channel with **Flat Surface Mounting Brackets**
- Angle Adjustable LED Channels with **Adjustable Mounting Brackets**

Type:.....**LED Channel**  
Material:...**Aluminum 6063-T5**  
Surface:.....**Clear Anodized**  
Height:.....**28.50mm / 1.12"**  
Width:.....**45.70mm / 1.80"**

### Length Availability

4ft (Actual Size 47") / 1.20m  
8ft (Actual Size 94") / 2.40m  
10ft (Actual Size 118") / 3.00m



## Accessories

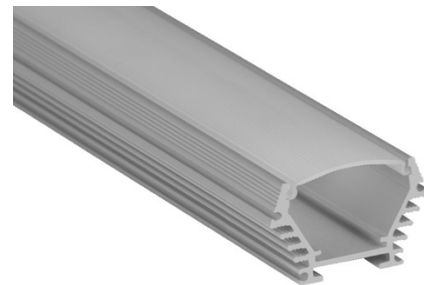
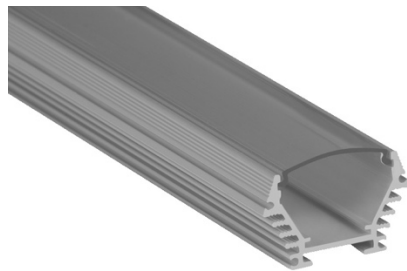
### Diffuser Cover Lens



Clear Stripped Diffuser  
D09



Frosted Stripped Diffuser  
D10

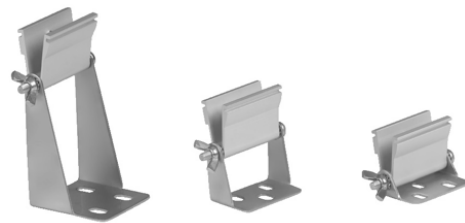
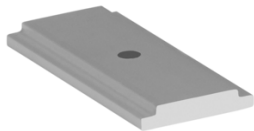
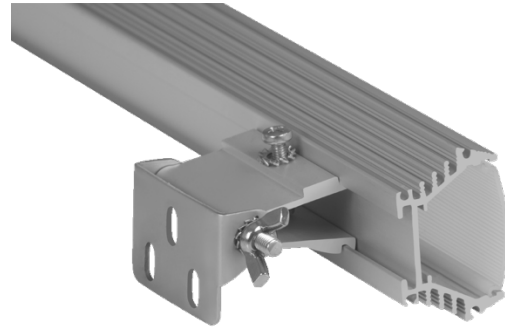
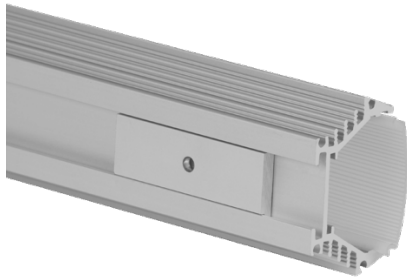


### End Caps



E37  
Plastic End Cap

## Mounting



478ASL-BRC  
Flat Surface Mounting Bracket

AMB-L /// AMB-M /// AMB-S  
Adjustable Mounting Brackets



PK01

### Pendant / Suspension Kit

Kit includes 2 steel wires (5ft) and connection parts.

