

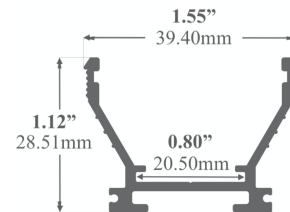
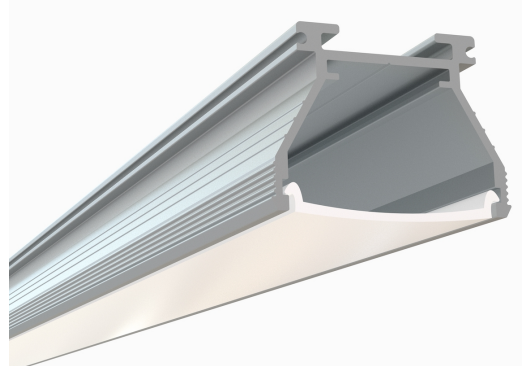
LED Channel - 701 Series

The **701ASL** is a **medium-sized LED Channel** compatible with **LED Strips up-to 20mm (0.79") wide**. This profile offers a uniform lighting with **Opal Diffuser** eliminating the hotspots.

Thanks to its **mounting channel** on its back side, it features a **wide range of installation options**.

701 Series can be used with three different mounting options;

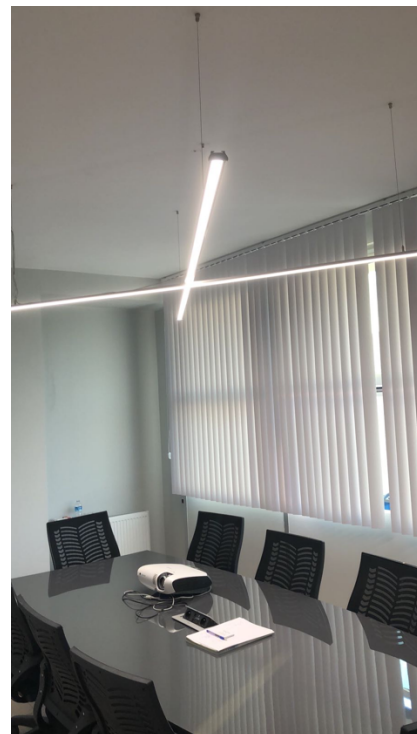
- Pendant LED Channel with **Suspension Kit**
- Surface Mount LED Channel with **Flat Surface Mounting Brackets**
- Angle Adjustable LED Channels with **Adjustable Mounting Brackets**



Type:.....**LED Channel**
 Material:...**Aluminum 6063-T5**
 Surface:.....**Clear Anodized**
 Height:.....**28.51mm / 1.12"**
 Width:.....**39.40mm / 1.55"**

Length Availability

4ft (Actual Size 47") / 1.20m
 8ft (Actual Size 94") / 2.40m
 10ft (Actual Size 118") / 3.00m



Accessories

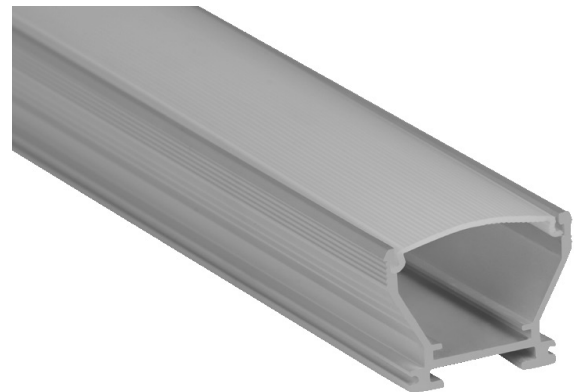
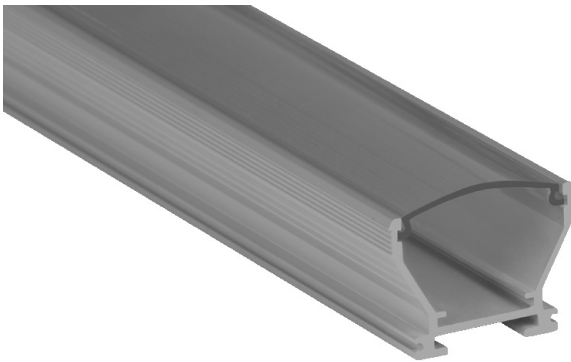
Diffuser Cover Lens



Clear Stripped Diffuser
D09



Frosted Stripped Diffuser
D10

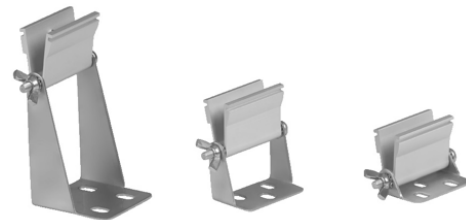
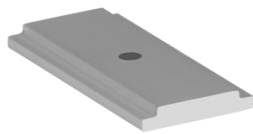
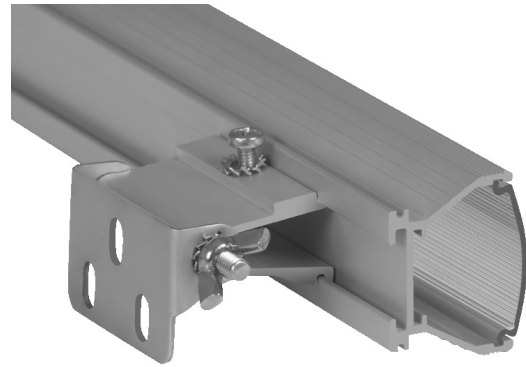


End Caps



E34
Plastic End Cap

Mounting



478ASL-BRC
Flat Surface Mounting Bracket

AMB-L /// AMB-M /// AMB-S
Adjustable Mounting Brackets



PK01

Pendant / Suspension Kit

Kit includes 2 steel wires (5ft) and connection parts.

