

Up & Down Suspended Linear LED Channel - 550 Series

The **550 Series** is the **Up & Down Suspended Linear LED Channel** with a **wide slot on one side to place heatsink insert** and **two narrow channels on the other side**.

Flat Heatsink Sliders are compatible to place LED Lighting sources.

Flat heatsink insert offers a LED lighting source application surface **up to 2.32" (59mm)** wide.

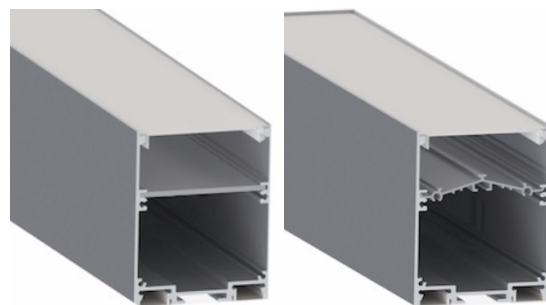
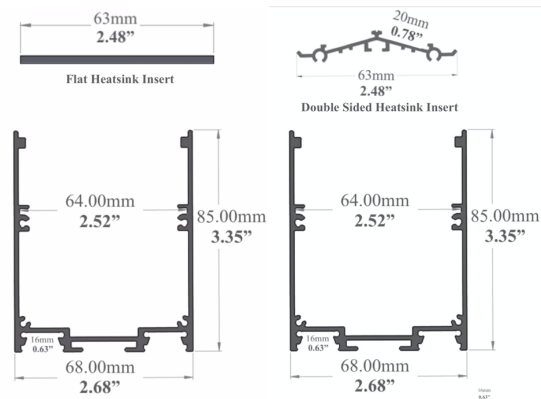
Double Sided heatsink insert offers a LED lighting source application surface **compatible with LED Strips up-to 2x (20mm/0.79")** wide.

This profile offers a **large internal housing space for LED Drivers**.

Rich accessories offer application options like **surface mount and suspended**.

Type:.....**LED Channel**
 Material:....**Aluminum 6063-T5**
 Surface:.....**Clear Anodized**
 Height:.....**85.00mm / 3.35"**
 Width:.....**68.00mm / 2.68"**

Length Availability
 4ft (Actual Size 47") / 1.20m
 8ft (Actual Size 94") / 2.40m
 10ft (Actual Size 118") / 3.00m



Accessories

Diffuser Cover Lens for UP (Narrow) Side



Clear Flat Diffuser
D21



Clear Arc Diffuser
D22

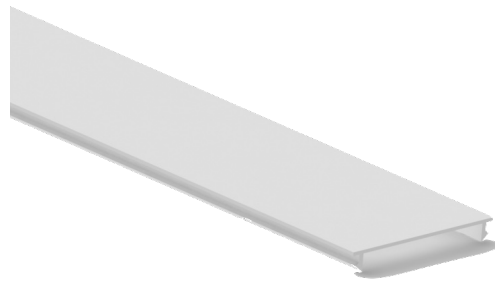


Frosted Flat Diffuser
D23



Frosted Arc Diffuser
D24

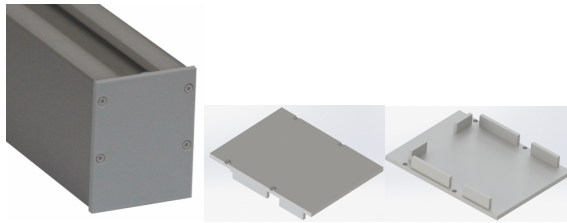
Diffuser Cover Lens for Down (Wide) Side



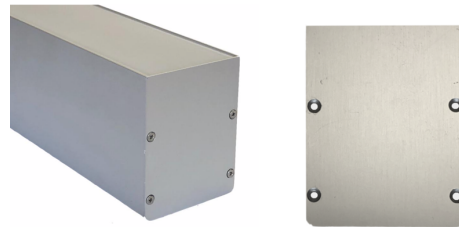
Frosted Diffuser
D28



End Caps



Plastic End Cap

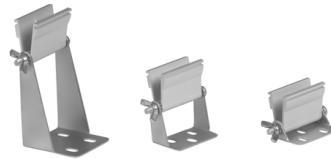


Metal End Cap

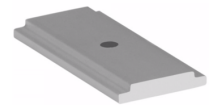
Mounting



Suspension Kit
(Includes 2 steel wires of
1.5m/4.92ft and connection parts)



Adjustable Mounting Brackets
(Small – Medium – Large)



Flat Surface Mounting Bracket
(478-BRC)

